

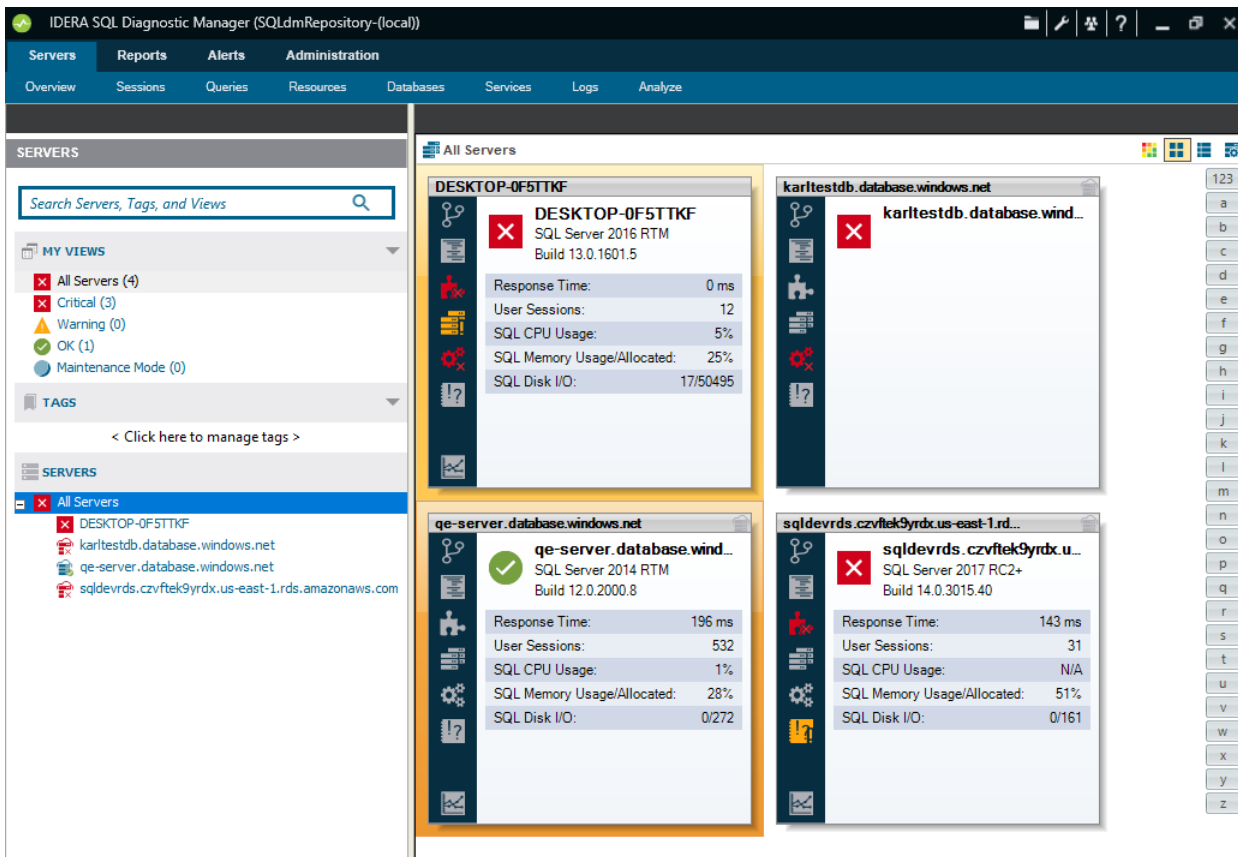
MONITOR  
CLOUD  
DATABASES  
WITH SQL  
DIAGNOSTIC  
MANAGER

# INTRODUCTION

SQL Diagnostic Manager (SQL DM) is a database tool specifically designed to diagnose and tune Microsoft SQL Server. It allows you to analyze the state of SQL Server, discover potential problems, and generate reports. SQL DM users can also monitor the managed cloud databases Microsoft Azure SQL Database and Amazon RDS for SQL Server. SQL DM can monitor seamlessly all three database platforms with the same graphical user interface (GUI). This key feature allows SQL DM to shorten the learning curve for database administrators, cut licensing costs, and reduce application footprints.

# MONITORING SUPPORT

SQL DM fully supports Azure SQL Database (single database, elastic pools, and managed instance) and Amazon RDS for SQL Server. The following screen capture image shows SQL DM monitoring the different database platforms in a single window:



SQL DM monitoring different database platforms.

SQL DM displays the database instances at the bottom of the left panel. The tool represents managed cloud database instances by cloud icons, allowing users to recognize them easily. The Discovery feature finds all the servers associated with your cloud vendor credentials. You can then easily add your managed cloud database instances.

The right panel shows a separate display for each of these instances. It displays details such as response time, number of user sessions, CPU usage, memory usage, and disk input and output.

## DETAILED GRAPHICAL USER INTERFACE

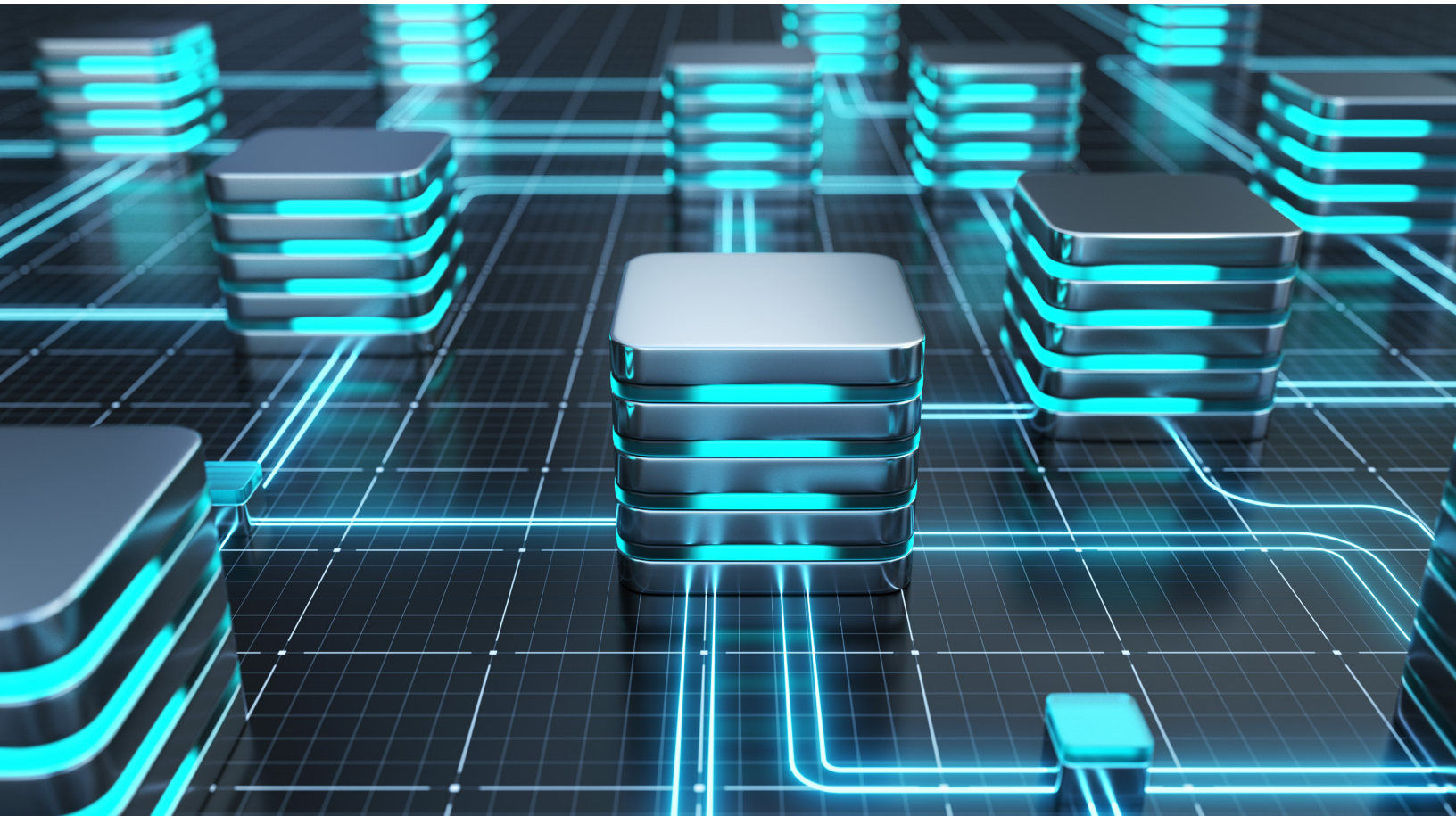
The menu bar includes a Servers tab on the far left that includes the following sub-tabs for monitoring database instances: Overview, Sessions, Queries, Resources, Databases, Services, Logs, and Analyze.

1. The **Overview** tab includes the Dashboard, Details, Configuration, Active Alerts, and Timeline views.
2. The **Sessions** tab includes the Summary, Details, Locks, and Blocking views.
3. The **Query Monitor** is a useful tool that allows you to log and analyze queries. You can discover the worst performing queries, visualize complex SQL queries, pinpoint root causes, and generate recommendations to improve how databases and queries perform. The Query tab includes the Signature Mode, Statement Mode, Query History, and Query Waits views.
4. The **Resources** tab allows you to monitor the system resources on the server hosting the database instance. It includes the Summary, Memory, Disk, Disk Size, File Activity, and Server Waits views.
5. The **Databases** tab provides a graphical analysis of the used, unused, and index disk space of the databases. You can view the size and structure of database tables. It also provides a list of data size, text or image size, index page size, and the number of table rows, making reorganization and index creation decisions easier. The Databases tab includes the Summary, Availability Group, Tempdb Summary, Database Configuration, Files, Backups & Restores, and Tables & Indexes views.
6. The **Services** tab allows you to view the status and manage your SQL Server services. These services include Distributed Transaction Coordinator (DTC), SQL Server, SQL Server Agent, and SQL Server Browser. It includes the Services Summary and SQL Agent Jobs views.

7. The **Logs** tab allows you to view SQL Server-related logs. Use these logs to diagnose SQL Server problems where a history of events is necessary to form context. The current log displays as selected by default. You can also select archived or even multiple archived logs to view or search. Filter and Search options allow you to locate the areas of the logs that are most important.
8. The **Analyze** tab runs prescriptive analysis on database instances to find and resolve performance problems. The analysis engine scans your database configuration for potential problems and the health of your instances. This analysis results in a useful set of recommendations for improving performance for your monitored database instances.

## SUMMARY

SQL DM is a performance monitoring solution for SQL Server running in a variety of environments, including Azure SQL Database and Amazon RDS for SQL Server. It provides a general overview and detailed metrics for database instances with a single dashboard from a centralized location.



# SQL DIAGNOSTIC MANAGER

Reduced availability and performance of Microsoft SQL Server can severely impact the critical applications that it supports.

SQL Diagnostic Manager for SQL Server provides robust SQL Server monitoring functionality that covers the performance of the entire SQL Server environment and provides the most comprehensive diagnostics on the market.

- Monitor physical, virtual, and cloud environments.
- Track queries and plans to fix blocks and locks.
- Alert predictively and avoid false alerts.
- View expert advice with executable scripts.

Start for **FREE**

